

SEYED MOHAMMAD MADHI HAMDI, FATOLAH FALLAHIAN, MOSTAFA ASSADI & ALI ASGHAR MAASSOUMI

Linaria khorasanensis (Scrophulariaceae), a new species from Iran

Abstract

Hamdi, S. M. M., Fallahian, F., Assadi, M. & Maassoumi, A. A.: *Linaria khorasanensis* (Scrophulariaceae), a new species from Iran. – Willdenowia 35: 299-304. – ISSN 0511-9618; © 2005 BGBM Berlin-Dahlem.

doi:10.3372/wi.35.35211 (available via <http://dx.doi.org/>)

Linaria khorasanensis from Khorasan province, NE Iran, is described as a species new to science and illustrated. The species belongs to *L. sect. Linaria* and is compared with its presumed closest relatives *L. striatella* and *L. odora*.

The genus *Linaria* Mill. is widely distributed throughout the world except the Americas and comprises annual or perennial herbs growing in a wide variety of habitats including dry and sandy areas and rocky slopes. Sutton (1988) recognized 150 species, of which 22 occur in Iran.

In the course of revising *Linaria* material of different herbaria in Iran (FUMH, IRAN, TARI, TUH, abbreviations according to Holmgren & Holmgren 1998-), specimens of *Linaria* were found that could not be identified with any known species. Closer investigation, including micro-morphological studies of seed and capsule surface, revealed that the material represents a hitherto undescribed species of *L. sect. Linaria*, which is here described as new to science.

***Linaria khorasanensis* Hamdi & Assadi, sp. nov.**

Holotype: Iran, Khorasan province, Mashad, SW of Moghan Mt, 2300 m, 14.2.1991, *Jouharchi* (FUMH 33665) – Fig. 1, 2e, g-h, 3c.

Planta perennis, herbacea, glauca, praeter inflorescentiam glabra, erecta. *Caules* fertiles 30-35 cm longi, supra ramosi. *Folia* caulium fertileum 15-35 × 0.8-1 mm, alterna, linearia, acuta. *Inflorescentia* 8-10 cm longa, laxa, 8-12-floribus; bractaeae 4-8 × 1 mm, lanceolatae, acutae, glabrae; pedicelli 3-5 mm longi. *Calycis* lobi aequalae, 3 × 1 mm, acuti, ovati, nec scariosi. *Corolla* 10-12 mm longa, flava, venis violaceis; tubo ore 3-3.5 mm lato; labii abaxialis sinu 1.1 mm profundi; calcarae 5-6 mm longo, 0.8 mm lato ad basem, recto, reliquiam corolla aequanti. *Capsula* 3 × 2 mm, calycem aequantem; *semina* 1.1 × 0.9 mm, alata, alae 0.4-0.7 mm, reniformia, atro-cinerea.

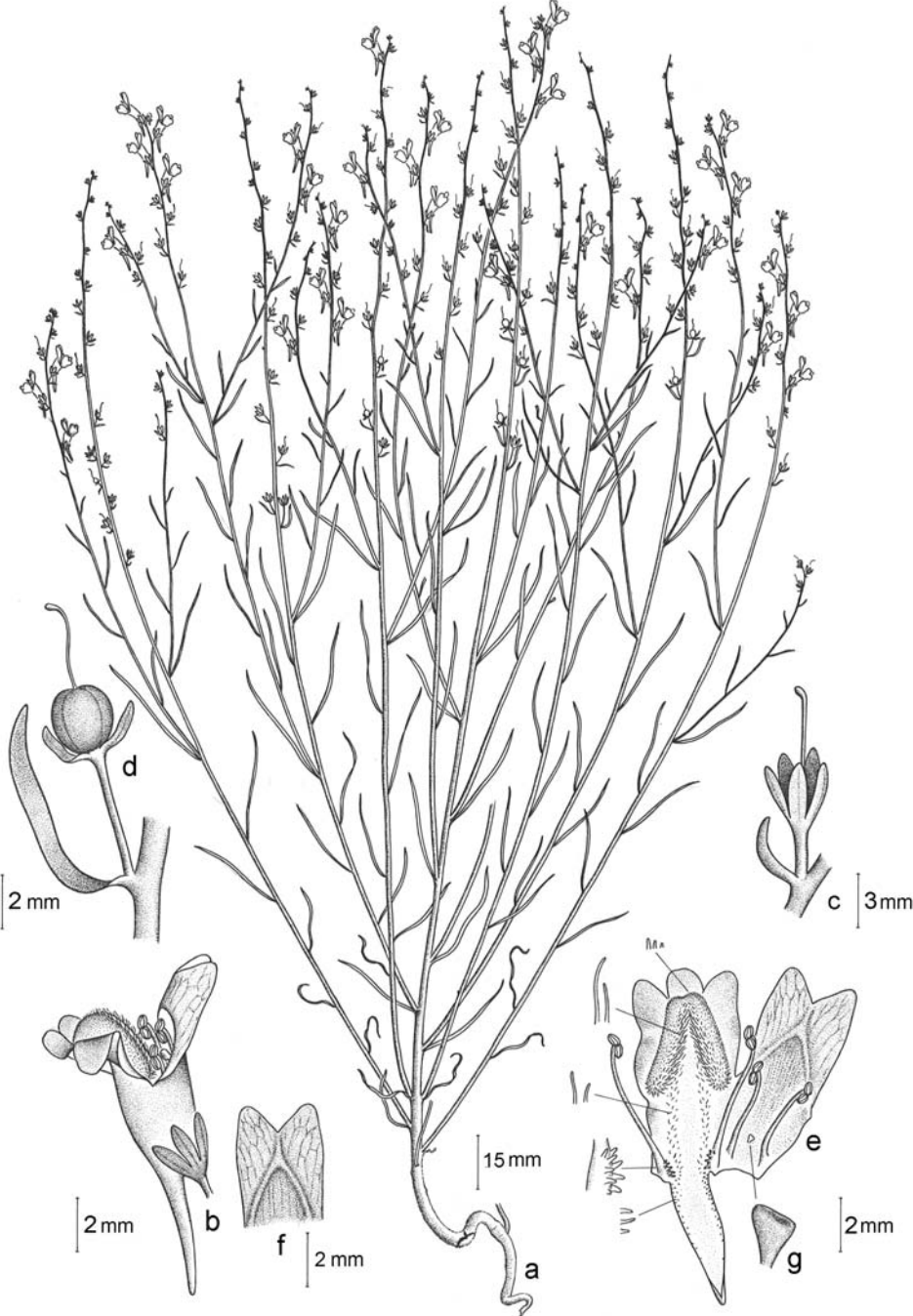


Fig. 1. *Linaria khorasanensis* – a: habit; b: flower; c: calyx; d: capsule; e: opened corolla; f: abaxial lip sinus; g: sterile stamen. – Drawn by M. Mehranfard after the specimen FUMH 24286.

Glaucous perennial herb, glabrous except for the inflorescence, erect; fertile stems 30-35 cm long, branched. *Leaves* of fertile stems 15-35 × 0.8-1 mm, alternate, linear-filiform, acute. *Inflorescence* 8-10 cm long, with 8-12 flowers, lax in flowering and fruiting stages; *bracts* 4-8 × 1 mm, acute, lanceolate, glabrous; *pedicels* 3-5 mm long. *Calyx* with equal lobes, 3 × 1 mm, acute, ovate, not scarious. *Corolla* 10-12 mm long, yellow with violet veins or tinged with violet; tube 3-3.5 mm broad at mouth; abaxial lip sinus 1.1 mm, the distance to lip apex 1.5 mm; spur 5-6 mm long, 0.8 mm broad at base, straight, equalling in length the rest of the corolla. *Capsule* 3 × 2 mm, equalling the calyx; *seeds* 1.1 × 0.9 mm, reniform, wing 0.4-0.7 mm broad, dark grey with finely tubercled seed coat cells.

Etymology. – The new species is named after the Khorasan province in NE Iran

Distribution and habitat. – *Linaria khorasanensis* grows in mountainous habitats of Khorasan province, NE Iran, at an altitude of 1850-2550 m, mainly in open woodland of *Juniperus excelsa*, and is presumably endemic to this region.

Additional specimens studied. – Mashad, Cheshmeh Parishan, 2550 m, 2.6.1994, *Amirabadi & Abassi* 3338 (herb. Research Center Forests and Rangelands Mashad); Shirvan to Verk, 1850 m, 25.6.1994, *Zangouii & Hoseinzadeh* (FUMH 24286).

Relationship. – The new species occurs sympatrically with and appears to be related to *Linaria odora* (M. Bieb.) Fisch., distributed from the N Black and Caspian Sea to central Iran, and *L. striatella* Kuprian., distributed from Central Asia to central Iran (Davis 1982, Kuperianova 1950,

Table 1. Morphological comparison of *Linaria khorasanensis*, *L. striatella* and *L. odora*.

Characters	<i>L. khorasanensis</i>	<i>L. odora</i>	<i>L. striatella</i>
Stem (height) [cm]	30-35	15-30	30-65
Leaves [mm]	15-35 × 0.8-1	20-25 × 1	55-60 × 1
Pedicel [mm]	3-5	1-1.5	0.8-1.5
Bracts [mm]	4-8 × 1	1 × 0.5	2-2.2 × 0.3-0.5
Calyx lobes [mm]	3 × 1	3 × 1	4 × 1-2
Corolla	10-12 × 3-3.5	11-14 × 4	16-22 × 5-6
Spur [mm]	5-6 × 0.8	4-5 × 1	10-11 × 0.8-1
Ratio spur / rest of corolla	equal	smaller	subequal
Abaxial lip sinus of corolla [mm]	1.1	1-1.3	0.4
Sinus to apex of abaxial lip [mm]	1.5-2	1.2	3
Long stamens [mm]	6-6.4	4.5-4.7	6-6.2
Short stamens [mm]	3.5-3.7	3-3.2	4.4-4.6
Staminodes [mm]	2	1	2
Capsule [mm]	3 × 2	3 × 3	5 × 5.5
Seed [mm]	1.1 × 0.9	2.5 × 0.6	2.7 × 3
Seed form	reniform	reniform	reniform to orbicular
Seed wing (diam.) [mm]	0.4-0.7	0.6-1.2	0.5-0.8
Cell shape of seed corpus	polygonal	pentagonal-hexagonal	polygonal
Cell shape of seed wing	pentagonal	pentagonal	polygonal
Surface of seed coat cells	tubercled	± smooth	± smooth
Length of corpus cell [µm]	25-33	20-30	15-20
Width of corpus cell [µm]	20-22	15-18	10-12
Length of wing cell [µm]	65-80	45-70	30-60
Width of wing cell [µm]	35-50	15-30	15

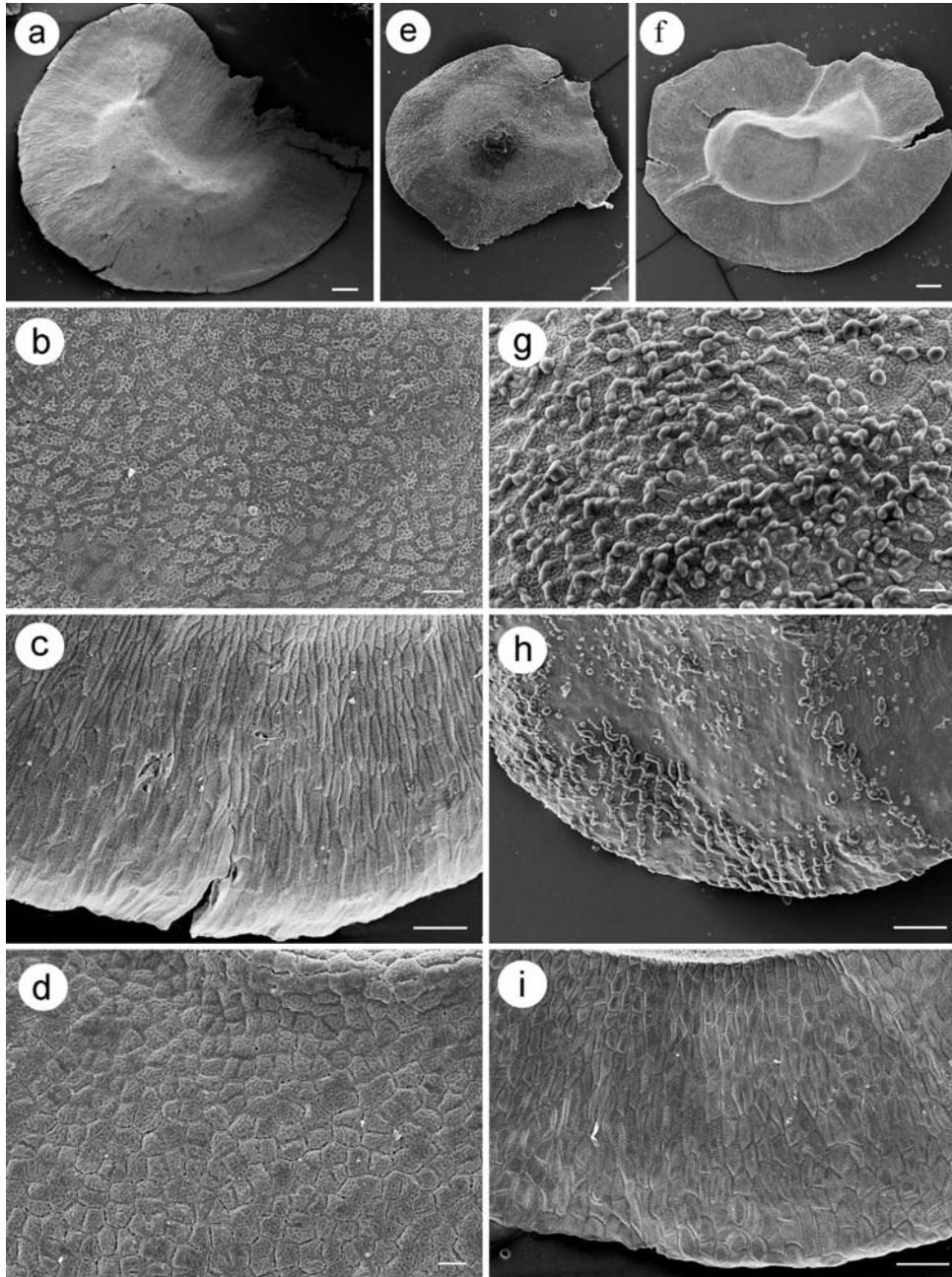


Fig. 2. Scanning electron micrographs of seeds of *Linaria* – a-c: *L. striatella* from TARI 27425 (Tehran to Ghazvin, 84 km N Ghazvin, 1680 m, 1.7.1972, *Hariri & Froughian*), overview (a), testa cells of seed corpus (b) and wing edge (c); – e, g-h: *L. khorasanensis* from FUMH 24286, overview (e), testa cells of seed corpus (g) and wing edge (h); – d, f, i: *L. odora* from TARI 21426 (E Tehran, Ozineh protected area, 12.7.1972, *Arazam & Dini*), overview (f), testa cells of seed corpus (d) and wing edge (i). – Scale bars: a = 200 μ m, b = 30 μ m, c, h, i = 100 μ m, d, g = 20 μ m, e = 300 μ m.

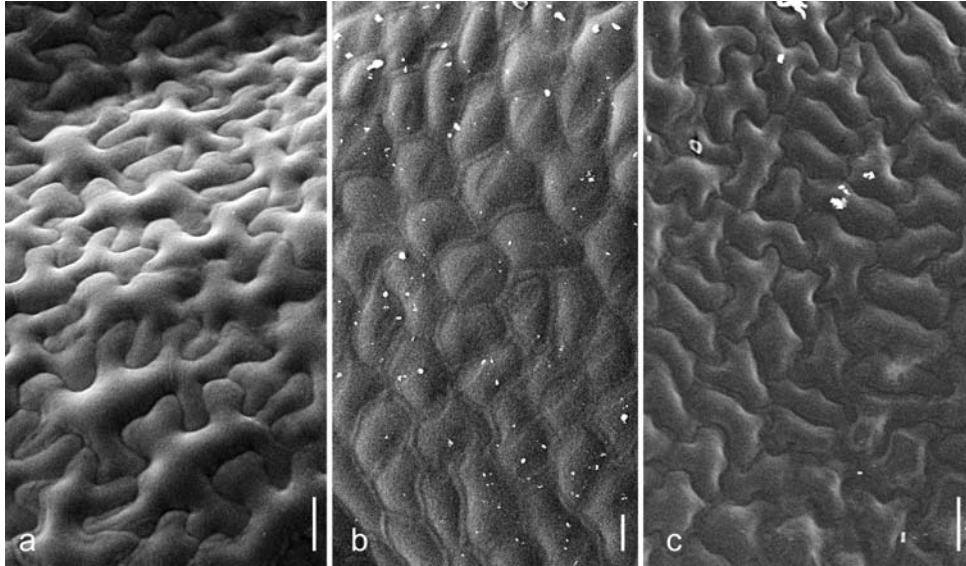


Fig. 3. Surface of inside wall at the base of valve of dehiscent capsules of *Linaria* – a: *L. odora*; b: *L. striatella*; c: *L. khorasanensis*. – Scale bars = 100 μ m; a from TARI 21426 (see caption Fig. 2), b from TARI 27425 (see caption Fig. 2), c from FUMH 24286.

Sutton 1985). It differs from *L. odora* in the size of the spur, pedicel, bracts and seeds, and from *L. striatella* in the size of the bracts, corolla, spur, pedicel, capsule and seeds (Table 1). Seed coat micromorphology (Elisens 1985) provides further differences: the seed coat cells of *L. khorasanensis* are conspicuously ornamented with tubercles, while they are \pm smooth in *L. odora* and *L. striatella*; less conspicuous differences regard the shape and size of the seed coat cells (Fig. 2, Table 1). The inside capsule surface cells of *L. khorasanensis* are distinctly smaller than those in *L. odora* and differ in shape from those in both *L. odora* and *L. striatella* (Fig. 3).

Using the most apparent and reliable feature for distinguishing *Linaria striatella*, *L. odora* and *L. khorasanensis*, the three species can be keyed out as follows:

1. Corolla more than 15 mm long *L. striatella*
- Corolla less than 15 mm long 2
2. Pedicel and bracts at least 3 mm; the spur equalling rest of corolla *L. khorasanensis*
- Pedicel and bracts less than 2 mm; the spur shorter than rest of corolla *L. odora*

Acknowledgements

The authors wish to thank Mrs N. Sadeghi and Mrs M. Eshghi for assistance with the scanning electron microscope, Mr M. Mehranfard from IRAN herbarium for the drawing of the new species, and the referees E. Fischer (Koblenz) and M. Bigazzi (Firenze) for valuable comments on a previous version of the manuscript.

References

- Davis, P. H. 1982: *Scrophulariaceae*. – Pp. 458-748 in: Davis, P. H. (ed.), *Flora of Turkey and the East Aegean Islands* 5. – Edinburgh.
- Elisens, N. J. 1985: The systematic significance of seed coat anatomy among new world species of tribe *Antirrhineae* (*Scrophulariaceae*). – *Syst. Bot.* 10: 282-299.

- Holmgren, P. K. & Holmgren, N. H. 1998- (continuously updated): Index herbariorum. – <http://sciweb.nybg.org/science2/IndexHerbariorum.asp>
- Kuprianova, L. A. 1950: *Linaria*. – Pp. 178-225 in: Šiškin, B. K. & Bobrov, E. G. (ed.), *Flora SSSR 22*. – Moskva & Leningrad.
- Sutton, D. A. 1988: A revision of the tribe *Antirrhineae*. – London & Oxford.

Addresses of the authors:

- S. M. M. Hamdi, F. Fallahian, Azad Islamic University, Tehran Science & Research branch, Faculty of Science, Department of Biology, Tehran, Iran; e-mail: mm_hamdi @ asia.com
- M. Assadi, A. A. Maassoumi, Research Institute of Forests & Rangelands, P.O. Box 13185-116, Tehran, Iran.